

Sign-up and Tracker registration (battery inserting in the last step!)

1. Go to <https://app.chipfox.cz> sign-up and create your user account
2. Click on > Add Tracker
3. If you have camera on your device, scan QR code included in the package or enter Registration code manually.
4. Registration to Sigfox network can take few minutes, please follow displayed instructions.
Tracker is now registered on your account and you can change its initial setting.
5. When new-custom setting is done (or you use initial) **insert battery**. Please observe polarity.

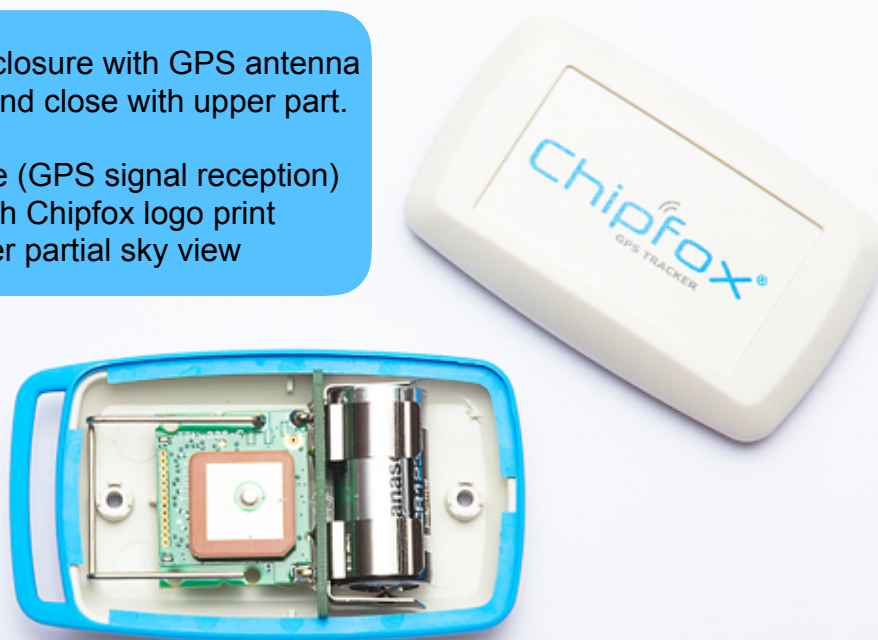
Green LED starts flashing. When green LED stops, new setting was accepted and Tracker is configured.

When red LED lights up, new setting wasn't received, probably due to poor signal. Please remove battery and insert again outside the building.

Important note: Tracker setting can be changed 1× per day - 24h (IoT Network restriction)

Place Tracker back in the enclosure with GPS antenna pointing upwards (pictured) and close with upper part.

For best Tracker performance (GPS signal reception) always try to place device with Chipfox logo print upward allowing GPS receiver partial sky view

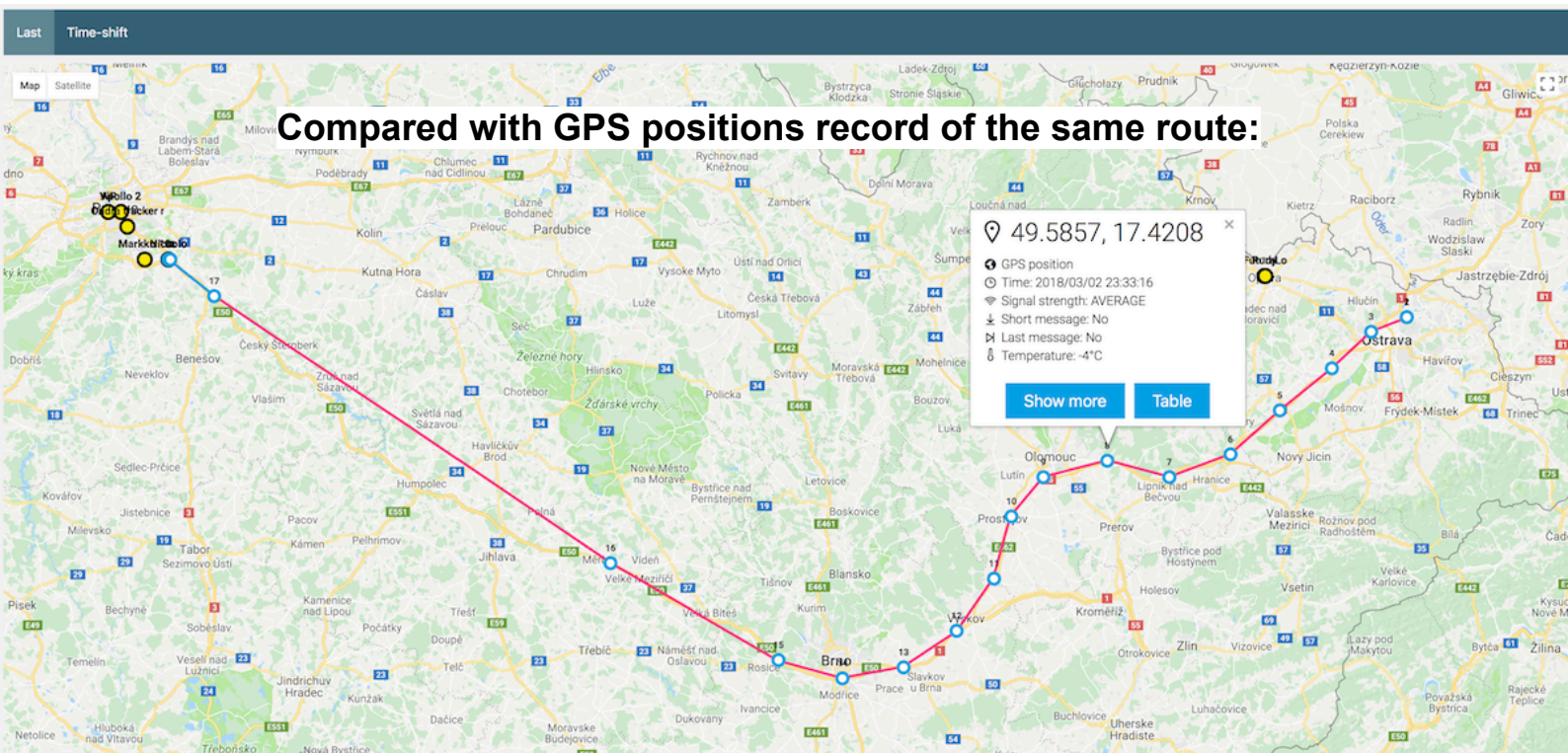
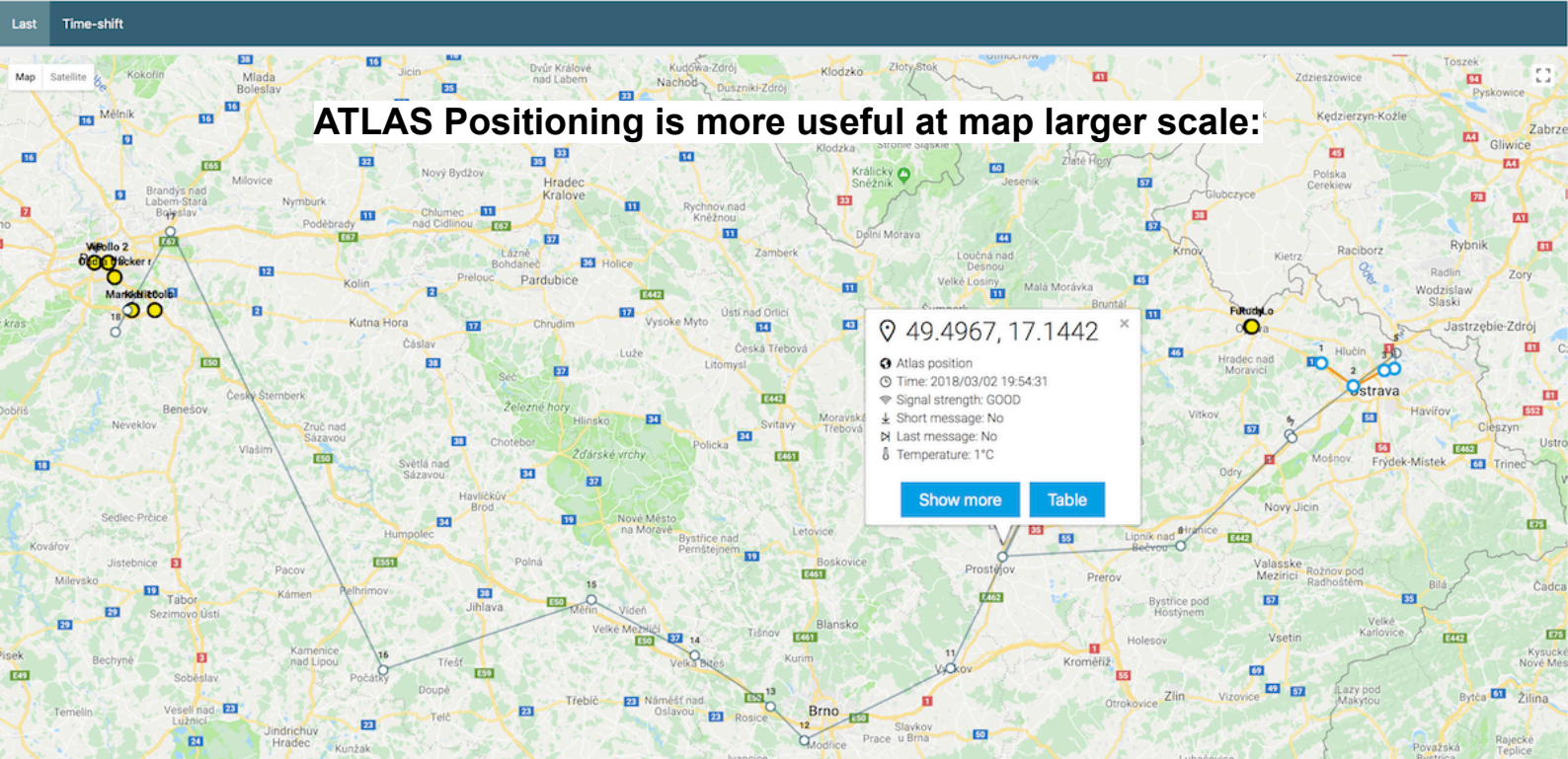


Tracker initial setting

- Tracker is activated from deep-sleep by **detected movement lasting longer than 45s**
- Position update is set to shortest period possible - **10min**
- **5 min** after stopping the **last position** is send
- Service message is sent once a day with **temperature and battery voltage**

Tracker basic settings

- You can set Tracker name and position update interval from 10 min up to 10 days
- To receive new setting Tracker must be restarted by battery removal. Setting can be changed once per 24 hours. (IoT network restriction). After restart **Green LED** starts flashing and then stops > OK.
- **Coming soon** - **Tracker colours and tracking modes** - device activation by long-lasting movement and long-lasting idle
- **Coming soon** - **Advanced settings** - energy saving functions, GPS setting, Accelerometer setting



WebApp Data table

- **TIME** - clicking on the row will display Tracker position at particular time
- **METHOD** - GPS or Atlas position geolocation, filtering in the table and the map
- **SHORT MESSAGE** - custom configured messages without GPS
- **LAST MESSAGE** - last position send 5 minutes after Tracker stops
- **ACQUISITION** - time needed for GPS fixation
- **SIGNAL** - quality of signal
- **SEQUENCE NUMBER** - messages numbering from the oldest to the most recent. If there is a gap (one or more numbers are missing) these messages were not delivered to Sigfox Backend (probably due to poor signal)

Service message - 1x per day - **marked green** - sends battery voltage & temperature

| Last | Time-shift | | | | | | | | | Show more |
|---------------------|------------|-----------------|-----------------|---------------|-----------------|----------------|---------------|----------|---------------|-----------|
| ▼ Time | ⚙ Method | ⚙ Latitude | ⚙ Longitude | ⚙ Temperature | ⚙ Short message | ⚙ Last message | ⚙ Acquisition | ⚙ Signal | ⚙ Seq. number | |
| YYYY/MM/DD | Select | | | | Select | Select | | Select | | |
| 2018/04/03 07:22:25 | GPS | 60.29782666667 | 24.85226666667 | 18 | No | No | 10 | GOOD | 934 | |
| 2018/04/03 07:03:44 | Adas | 60.460110173799 | 24.840380166847 | 23 | No | No | 90 | AVERAGE | 932 | |
| 2018/04/02 10:00:52 | GPS | 60.39064166667 | 24.69806166667 | 20 | No | Yes | 8 | LIMIT | 931 | |
| 2018/04/02 09:35:58 | Adas | 60.370846979489 | 24.815787888362 | 18 | No | No | 14 | LIMIT | 929 | |

- GPS positions
- ATLAS positions

coloured connecting lines (colours are changing)

grey connecting lines (stay always grey)

Previous GPS point always connects with the **following GPS point** by connecting line.

Map Data Geofences Settings

- Go to **Geofences** and add circle or polygon to the map
- Drag to adjust geofence size
- **Click on geofence and set:**
 1. Geofence name
 2. Direction (entering or leaving geofence)
 3. **Assign Tracker** to geofence
 4. Save geofence

Geofence settings

Name
Name

Direction
From inside to outside

Trackers
marc verdguer 251
Lava
Rudy
Apollo 2 XYZ

Save **Remove** **Cancel**

Battery status indicator

- Tracker sends battery voltage once per day with service message to display battery status in the app
- This is strongly affected by ambient temperature, battery level can drop at minus temperatures and rise up again at room temperature. 10-15% drop of battery level is normal at the beginning of Tracker usage.

APP installation on Android & iOS

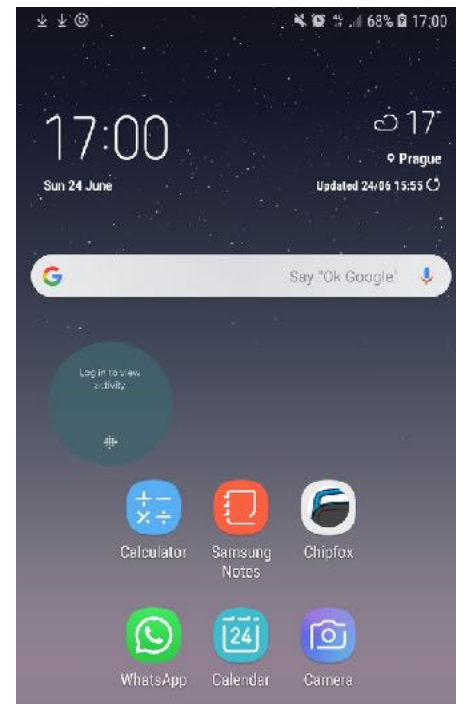
- Android - pop-up window with "add app" or manually save page (<https://app.chipfox.cz>) on desktop >create shortcut
- iOS - manually save page on desktop >create shortcut

System notifications

- MacOS + Safari
- Linux + Chrome
- Windows + Chrome, Firefox, Opera
- Notifications must be enabled in browsers
- Android
- iOS - not supported

Email notifications

- Supported by all OS



LOW POWER IoT DEVICE EXPLAINED on 60min ride with 20min coffee break

